

Leaving Cert. Music Self-Assessment

Please answer the following questions, which have been taken from previous Junior Certificate Music exams. This Self-Assessment (seven pages) should be completed and submitted with your application for the New School's Leaving Cert. Music Two-Year Course or if you are considering taking our Leaving Cert. Music Preliminary Course. If you have difficulty answering any of the questions, the school may recommend that you take our Preliminary Course in September and/or additional theory tuition before the Two-Year Course begins or you commence another Leaving Cert. Music course.

Answer A or B.

- A**
- 1 Set ONE of the verses (i) or (ii) or (iii) below to your own original music.
 - 2 Write for voice(s) and accompanying instrument(s) of your choice.
 - 3 Name these voice(s)/instrument(s) on the score. (100)

OR

- B**
- 1 Compose a short piece which will illustrate the mood of ONE of the verses below.
 - 2 Name the instrument(s) you select on the score. (100)

(i) **The Germ**
A mighty creature is the germ,
Though smaller than the pachyderm.
His customary dwelling place
Is deep within the human race.
Ogden Nash

(ii) **Hope Is The Thing With Feathers**
Hope is the thing with feathers
That perches in the soul,
And sings the tune without the words,
And never stops at all.
Emily Dickinson

(iii) **Saoirse**
Grian na maidine ag rince
Taisteal chun bóthair go luath
Capall, cairt agus sáspain
Le cloisint sna bailte mágauird.
Maidhc Dáinín Ó Sé

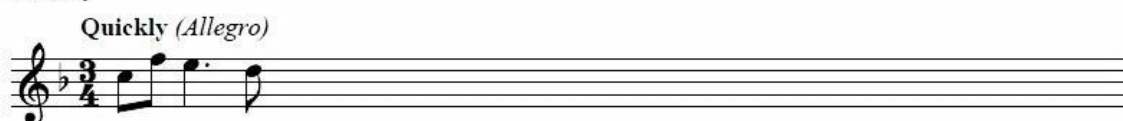
B A PHRASE SET TO A GIVEN OPENING

Study this opening.

Rhythm



Melody



Now complete this melody above as follows:

- 1 Add THREE bars to the given rhythm pattern. (27)
- 2 Compose a MELODY in the key of F for this rhythm. (4)
- 3 End on the KEYNOTE, that is, 'DOH'. (4)
- 4 Add suitable PHRASING. (4)

B CHORDS AT CADENCES FOR SATB CHOIR

Study the following incomplete piece and then answer the questions below.

At a walking pace (*Andante*)

Add parts for three or four voices, as appropriate, to form the following:

- 1 At 'X', an IMPERFECT cadence (IV – V) (12)
- 2 At 'Y', an INTERRUPTED cadence (V – vi) (12)
- 3 At 'Z', a PERFECT cadence and its approach chord (ii – V – I) (21)

Leaving Cert. Music Self-Assessment

A MELODY AND BASS NOTES AT CADENCES FOR KEYBOARD

Study the following incomplete piece and then answer the questions below.

At a walking pace (*Andante*)

C AN ANSWERING PHRASE

Study this four-bar opening phrase.

March time (*Alla marcia*)

Rhythm

||

Melody

Now compose an answering phrase above to complete this melody.
Make your answering phrase different from the opening phrase, as follows:

- 1 Write a FOUR-BAR rhythm pattern. (27)
- 2 Compose a MELODY in the key of G for this rhythm. (4)
- 3 End on the KEYNOTE, that is, DOH. (4)
- 4 Add suitable PHRASING. (4)

Leaving Cert. Music Self-Assessment

C BACKING CHORDS

Study the following tune. It is intended for chordal accompaniment.

Song of the Western Men

Folk-song

The musical score for 'Song of the Western Men' is presented in two staves. The first staff contains four measures of music, with a box for a chord symbol above each measure. The first box contains the symbol 'Bb'. The second staff contains six measures of music, with a box for a chord symbol above each measure. The melody is written in treble clef, with a key signature of one flat (B-flat major) and a time signature of 4/4.

The first symbol above the music indicates the chord of B flat.

Now fill in the other boxes as follows:

- 1 Select a suitable symbol as a backing chord in each box. (5 × 9 = 45)
- 2 Do NOT use Roman numerals (for example, I, ii, IV, etc.)
- 3 Do NOT have the same symbol twice in succession.

Leaving Cert. Music Self-Assessment

Twenty-one Years

Traditional

Moderately

The judge said, "Stand up, lad, and dry up your tears, ___ You're sen-tenced to Dart-

moor for twen-ty-one years." ___ So dry up your tears, love, and kiss me good-

bye, ___ The best friends must part, love, so must you and I. ___

- A What are the LETTER NAMES of the three notes at X? (6)
- B These notes form the triad of
- D minor
 - B flat major
 - C minor
 - F major
- (4)
- C This triad, written on the BASS stave, is
- -
 -
 -
- (5)
- D Select **one** of the following bars where this triad fits the melody.
- bar 7
 - bar 9
 - bar 14
 - bar 19
- (5)

Leaving Cert. Music Self-Assessment

A MELODY AND BASS NOTES AT CADENCES FOR KEYBOARD

Study the following incomplete piece and then answer the questions below.

Moderately (*Moderato*)

X Y Z

Add melody and bass notes to form the following:

- 1 At X, a PLAGAL cadence (IV—I) (12)
- 2 At Y, an INTERRUPTED cadence (V—vi) (12)
- 3 At Z, a PERFECT cadence and its approach chord (ii—V—I) (21)